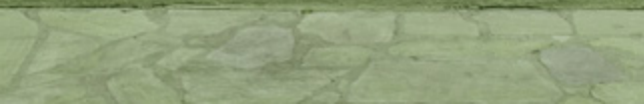


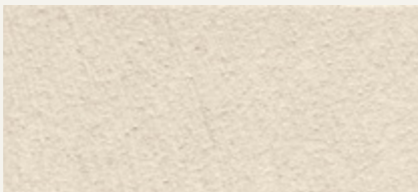
novacolor™
I colori dell'Architettura

Antiche Patine

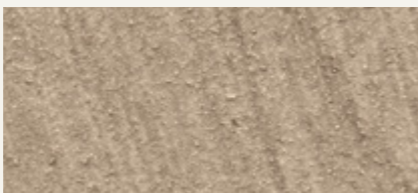
interior and exterior







FASE SILOSSANICA 6200



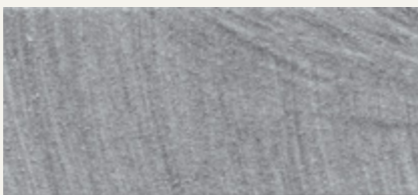
FASE SILOSSANICA 6201



FASE SILOSSANICA 6202



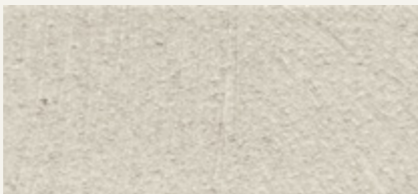
FASE SILOSSANICA 6203



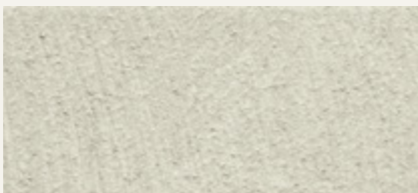
FASE SILOSSANICA 6204



FASE SILOSSANICA 6205



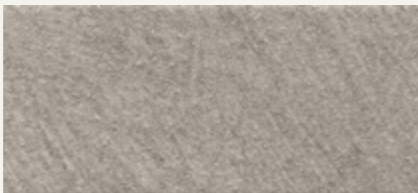
FASE SILOSSANICA 6206



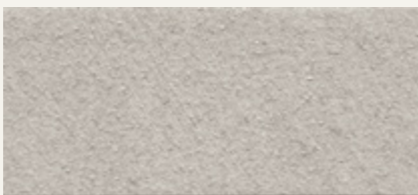
FASE SILOSSANICA 6207



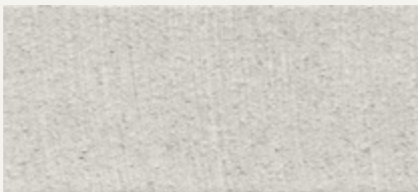
FASE SILOSSANICA 6208



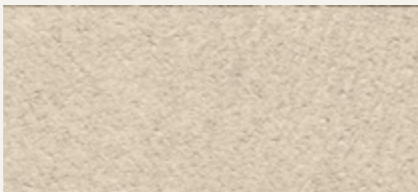
FASE SILOSSANICA 6209



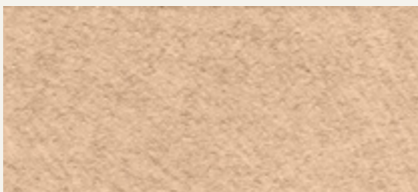
FASE SILOSSANICA 6210



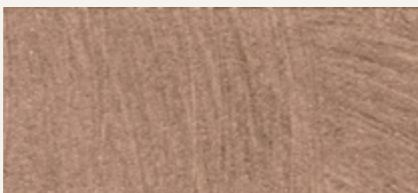
FASE SILOSSANICA 6211



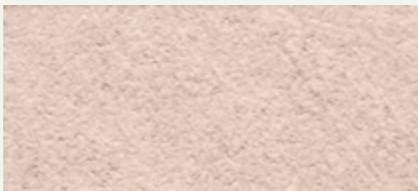
FASE SILOSSANICA 6212



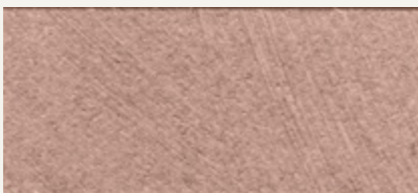
FASE SILOSSANICA 6213



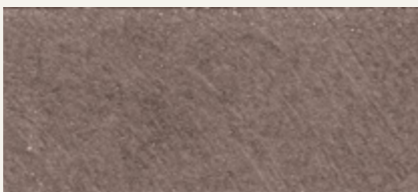
FASE SILOSSANICA 6214



FASE SILOSSANICA 6215



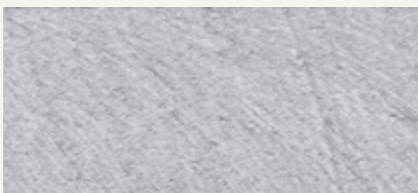
FASE SILOSSANICA 6216



FASE SILOSSANICA 6217



FASE SILOSSANICA 6218



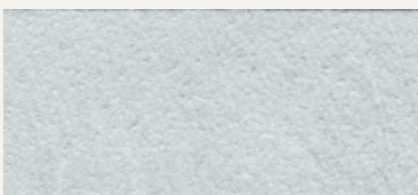
FASE SILOSSANICA 6219



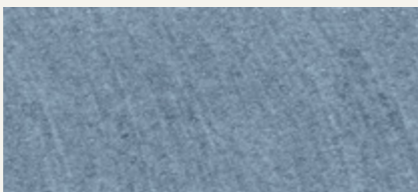
FASE SILOSSANICA 6220



FASE SILOSSANICA 6221



FASE SILOSSANICA 6222



FASE SILOSSANICA 6223

ANTICHE PATINE OFFRE UNE GAMME
DE LASURES POUR INTÉRIEURS ET EXTÉRIEURS

FASE SILOSSANICA
**Lasure siloxane pour application
en intérieurs et extérieurs**

Diluer avec au maximum 100% d'eau.
Appliquer une ou deux couches avec une
brosse, une éponge ou un gant à poil.
Rendement: 12-15 m²/l en deux couches.

PATINA MINERAL
**Lasure aux silicates pour supports
minéraux en intérieurs et extérieurs**

Diluer avec au maximum 20% d'eau.
Appliquer une ou deux couches avec une
brosse, une éponge ou un gant à poil.
Rendement: 4-8 m²/l en deux couches.

Pour plus d'informations, consulter
les fiches techniques respectives.



ANTICHE PATINE BIETET LAZUR-TECHNICK
IM INNEN UND AUSSEN-BEREICH

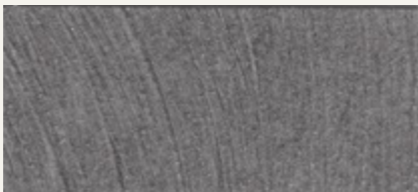
FASE SILOSSANICA
**Siloxan-Bindemittel für Lazur-Technick
im Innen und Aussen-Bereich**

Verdünnung mit Wasser bis zu 100%.
In ein oder zwei Schichten mit einem Pinsel,
Schwamm oder mit Haarhandschuh auftragen.
Ergiebigkeit: 12-15 m²/l in zwei Schichten.

PATINA MINERAL
**Silicat-lazur für mineralische Oberflächen
im Innen- und Außen**

Mit maximal 20% Wasser verdünnen.
In ein oder zwei Schichten mit einem Pinsel,
Schwamm oder mit Haarhandschuh auftragen.
Ergiebigkeit: 4-8 m²/l in zwei Schichten.

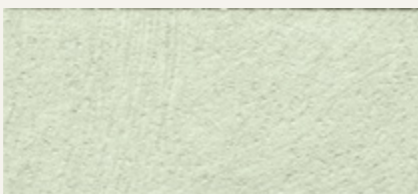
Weitere Informationen finden Sie
in den jeweiligen Datenblättern.



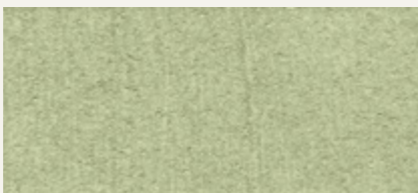
FASE SILOSSANICA 6224



FASE SILOSSANICA 6225



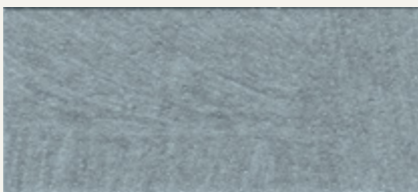
FASE SILOSSANICA 6226



FASE SILOSSANICA 6227



FASE SILOSSANICA 6228



PATINA MINERALE 6228

ANTICHE PATINE OFFRE UNA GAMMA
DI VELATURE PER INTERNI ED ESTERNI

FASE SILOSSANICA
**Veicolo silossanico per velature
in interni ed esterni**

Diluire con massimo 100% di acqua.
Applicare in uno o due strati con pennello,
spugna o con guanto di pelo.
Resa: 12-15 m²/l nei due strati.

PATINA MINERALE
**Velatura ai silicati per supporti
minerali in interni ed esterni**

Diluire con massimo 20% di acqua.
Applicare in uno o due strati con pennello,
spugna o con guanto di pelo.
Resa: 4-8 m²/l nei due strati.

Per maggiori informazioni consultare
le rispettive schede tecniche.



ANTICHE PATINE OFFERS A FULL RANGE
OF COLOR WASHES FOR INTERIORS AND EXTERIORS

FASE SILOSSANICA
**Siloxane color wash
for interiors and exteriors**

Dilute with 100% of water max.
Apply one or two layers with brush,
sponge or glove.
Yield: 12-15 m²/l in two layers.

PATINA MINERALE
**Silicate color wash for mineral
substrates in interiors and exteriors**

Dilute with 20% of water max.
Apply one or two layers with brush,
sponge or glove.
Yield: 4-8 m²/l in two layers.

For more information please check
the technical data sheets.







www.novacolor.it

Novacolor Srl
47122 Forlì - Italia
Via U. Aldrovandi 10
Tel +39 0543 401840
Fax +39 0543 414585
info@novacolor.it

MADE IN ITALY

Cod: N000165
04/2017

**AZIENDA CON SISTEMA
DI GESTIONE QUALITÀ
CERTIFICATO DA DNV GL
= ISO 9001 =**

**COMPANY WITH
QUALITY SYSTEM
CERTIFIED BY DNV GL
= ISO 9001 =**



NOVACOLOR is committed to reduce
the environmental impact by producing
friendly materials.